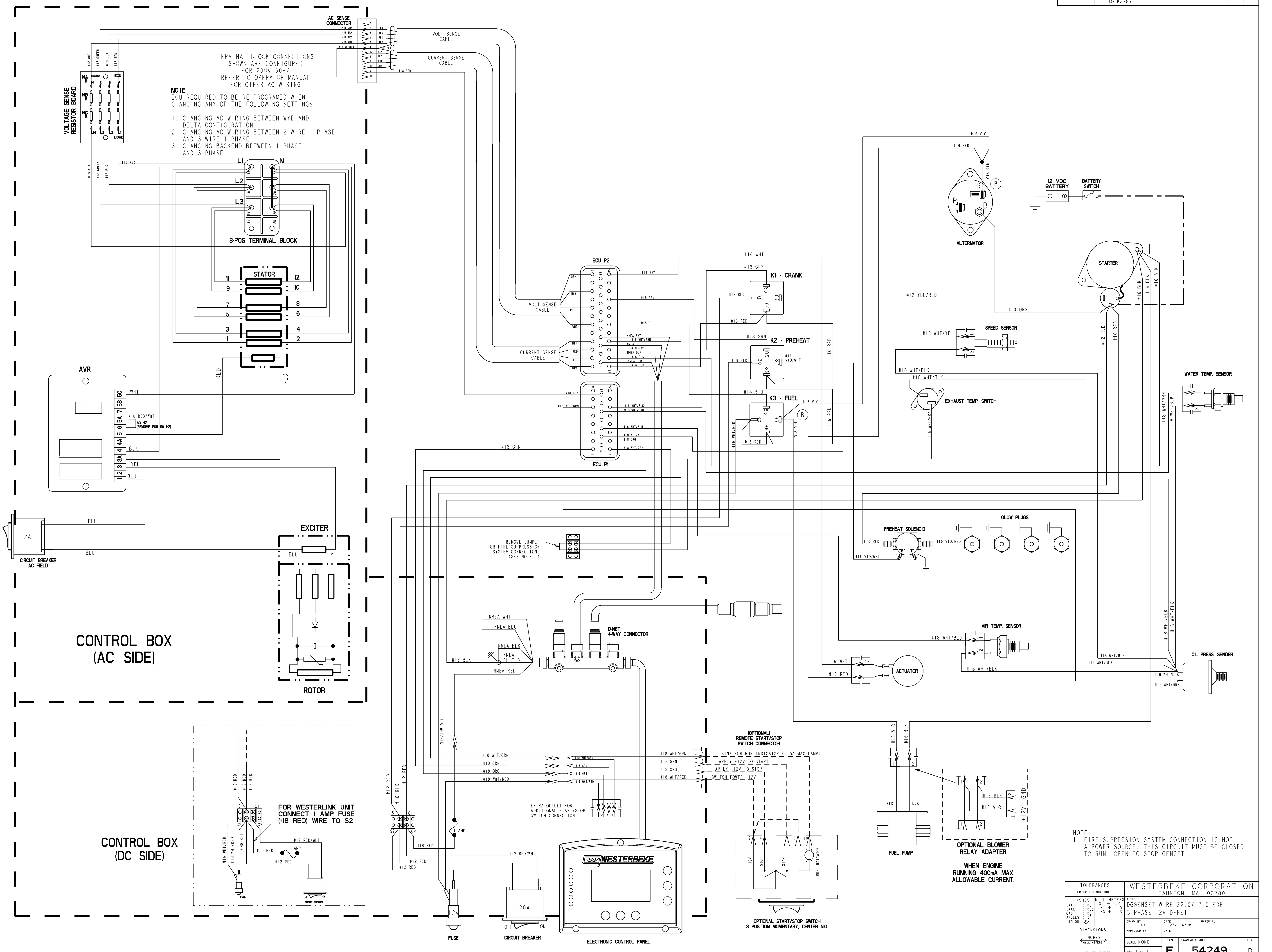


ECO NO.	DATE	REV.	REVISION RECORD	AUTH.	DR. BY
6532	4-28-08	A	RELEASE PART FOR PRODUCTION.		GA
6614	8-2-2009	B	ACTUATOR PIN 1 WAS CONNECTED TO K3-87 NOW IS CONNECTED TO ALT EXE. ALT EXE WAS CONNECTED TO K3-(87), NOW IS CONNECTED TO K3-87.		GA



TERMINAL BLOCK CONNECTIONS SHOWN ARE CONFIGURED FOR 208V 60HZ REFER TO OPERATOR MANUAL FOR OTHER AC WIRING

NOTE:
ECU REQUIRED TO BE RE-PROGRAMED WHEN CHANGING ANY OF THE FOLLOWING SETTINGS

1. CHANGING AC WIRING BETWEEN WYE AND DELTA CONFIGURATION.
2. CHANGING AC WIRING BETWEEN 2-WIRE 1-PHASE AND 3-WIRE 1-PHASE
3. CHANGING BACKEND BETWEEN 1-PHASE AND 3-PHASE.

REMOVE JUMPER FOR FIRE SUPPRESSION SYSTEM CONNECTION (SEE NOTE 1)

NOTE:
1. FIRE SUPPRESSION SYSTEM CONNECTION IS NOT A POWER SOURCE. THIS CIRCUIT MUST BE CLOSED TO RUN. OPEN TO STOP GENSET.

TOLERANCES (UNLESS OTHERWISE NOTED)		WESTERBEKE CORPORATION TAUNTON, MA. 02780	
INCHES	MILLIMETERS	TITLE	DWGSET WIRE 22.0/17.0 EDE
.XX	.02	SCALE	3 PHASE 12V D-NET
.XXX	.005	DATE	25/Jun/08
CASST	.XX	FINISH	3X
ANGLES	5°	DRAWN BY	GA
		DATE	25/Jun/08
DIMENSIONS	APPROVED BY	SCALE	NONE
INCHES		SIZE	DRAWING NUMBER
MILLIMETERS		SHT. 1 of 1	E 54249
(WHEN APPLICABLE)			REV. B